


Academic year: 1 st year		Depart.: Zoology
Section: Bio./Chem.		Subject: Entrance Zoology
Date: Jan/ 2012		Time allowed: 2 hour
Full Marks: 35		No. Of Pages: 7

Part I- PHYSIOLOGY

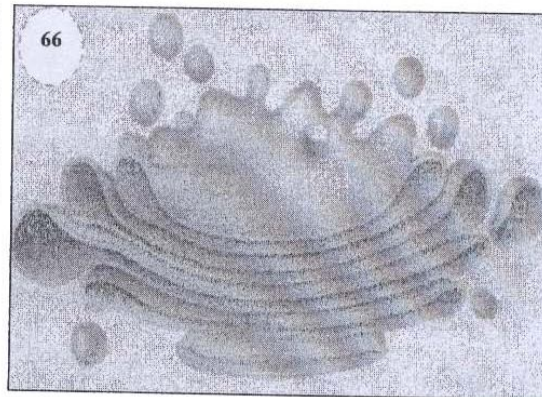
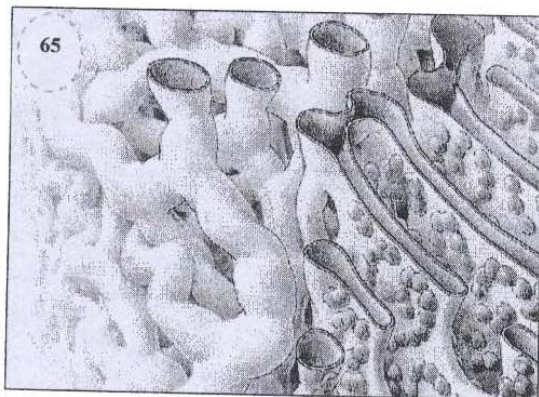
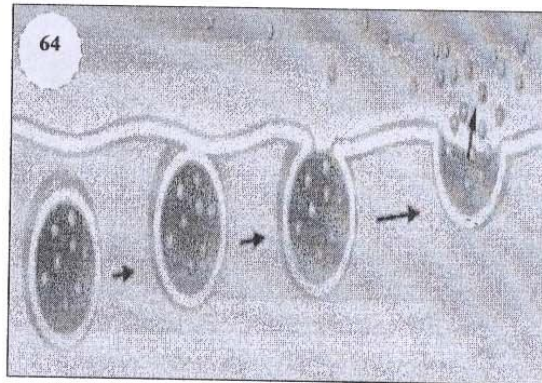
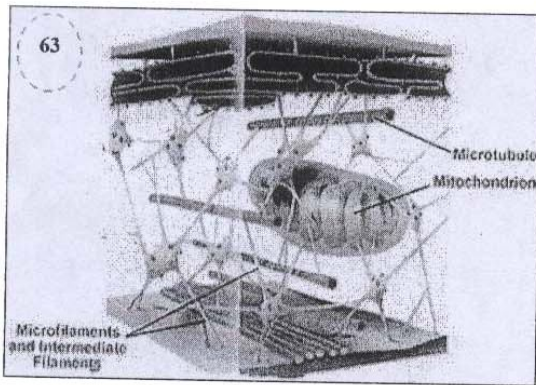
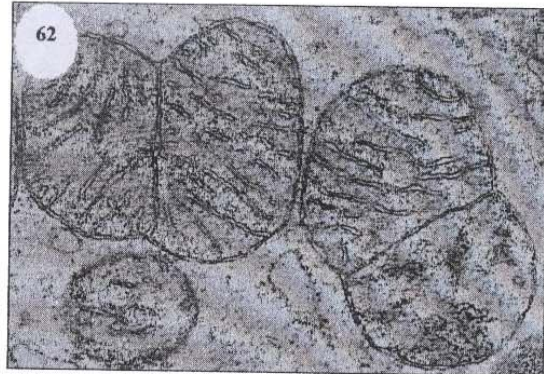
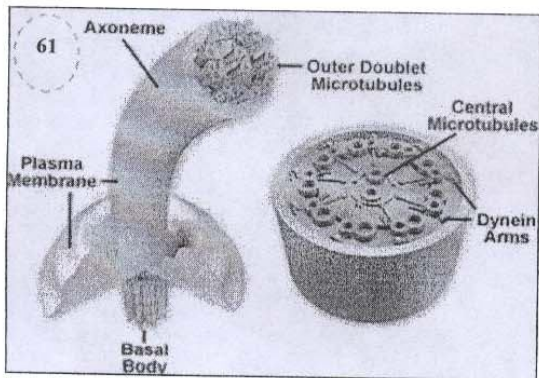
17.5 marks

Choose the correct answer:

<p>1- Its lack leads to sterility in both sexes</p> <p>a) vitamin K b) vitamin E c) vitamin A</p> <p>2- Caseinogens and hemoglobin are :</p> <p>a) simple proteins b) conjugated proteins c) derived proteins</p> <p>3- Fats, waxes and sterols are :</p> <p>a) simple lipids b) compound lipids c) derived lipids</p> <p>4- Scurvy occurs from a deficiency of vitamin C and may present as :</p> <p>a) bowed legs b) bleeding gums c) night blindness</p> <p>5- Iron is essential for which of the following :</p> <p>a) protein synthesis b) bone and teeth formation c) hemoglobin synthesis</p> <p>6- The principle function of carbohydrates is :</p> <p>a) supply the body with heat and energy b) the building up of protoplasm for growth and rebuilding of destroyed tissues c) as fuel and as structural constituents</p>	<p>7- The movement whereby the stomach contract to propel food through the digestive tract is called :</p> <p>a) segmentation b) swallowing c) peristalsis</p> <p>8- Pancreatic secretion will- as plasma levels of secretin hormone increases :</p> <p>a) increase b) remain the same c) decrease</p> <p>9- The gastrointestinal tract includes the following structures <u>except</u> :</p> <p>a) esophagus b) salivary glands c) stomach</p> <p>10- Absorption of monosaccharide and proteins is carry out by :</p> <p>a) passive transport b) active transport c) facilitated diffusion</p> <p>11- The end products of fats digestion are</p> <p>a) fatty acids and glycerin b) fatty acids and monosaccharide c) amino acids and glycerin</p> <p>12 - Pancreatic amylase acts on starch in an alkaline medium and changing it into :</p> <p>a) glucose b) maltose c) fructose</p>
--	--

- 28- Most of oxygen is transported in blood as :
- carbaminohemoglobin
 - dissolved in plasma
 - oxyhemoglobin
- 29- An enzyme in red blood cells which speeds up the reaction between CO₂ and H₂O to form carbonic acid is :
- enterokinase
 - carbonic unhydrase
 - invertase
- 30- The primary stimuli that increase breathing rate are :
- decreased CO₂ and hydrogen ion concentration
 - increased CO₂ and oxygen concentration
 - increased CO₂ and hydrogen ion concentration
- 31- Somatic nerve fibers innervate :
- skeletal muscle
 - smooth and cardiac muscle
 - glands
- 32- The central nervous system subdivided into :
- somatic and autonomic nervous system
 - sympathetic and parasympathetic nervous system
 - brain and spinal cord
- 33- Neuron which carry nerve impulses from the receptors to the central nervous system is called :
- afferent or sensory neuron
 - efferent or motor neuron
 - inter neuron
- 34- Non nervous cells form the myelin sheath , which insulates the axon and facilitates the transmission of impulses in these fibers are called :
- astrocytes
 - Schwann cells
 - monocytes
- 35- They are short branched and are the nerve cell's receptive apparatus :
- axon
 - dendrites
 - knobs

49. Solid and fluid transports across cell membranes were carried out by three methods
50. In mitochondria, when one phosphate molecule is split off, energy is liberated and ADP molecules becomes ATP molecules
51. The cell membrane proteins may be supportive protein
52. Proteins molecules may be serve as transport oxygen e.g antibodies
53. Microvilli is the lateral modified cell membrane
54. The digestive organelle in the cell is Golgi bodies
55. The Cis and Trans faces are present in Lysosome
56. The vimentin and cytokeratin are microtubules
57. Mitochondria are present in muscles more than in skin cells
58. Cell membrane find in a bacterial cell
59. The folds on the inner mitochondrial membrane called Ground substance
60. Ribosomes usually located in animal and plant cells near the cell membrane



With best wishes ✨ Dr. Samira El sayad ✨ Dr. Attalla El-kott